

# Metal Manufacturing and Fabricating Directory

## Sparking Progress.

**Metal fabrication is at the core of industry in Marathon County.  
See how your resources for fabrication success are all within reach.**

Over 5,000 seasoned fabricators work and live in Marathon County. By partnering with businesses and key educational providers, our county is in a position to continue to produce highly trained, local labor to drive the future of any fabricator.

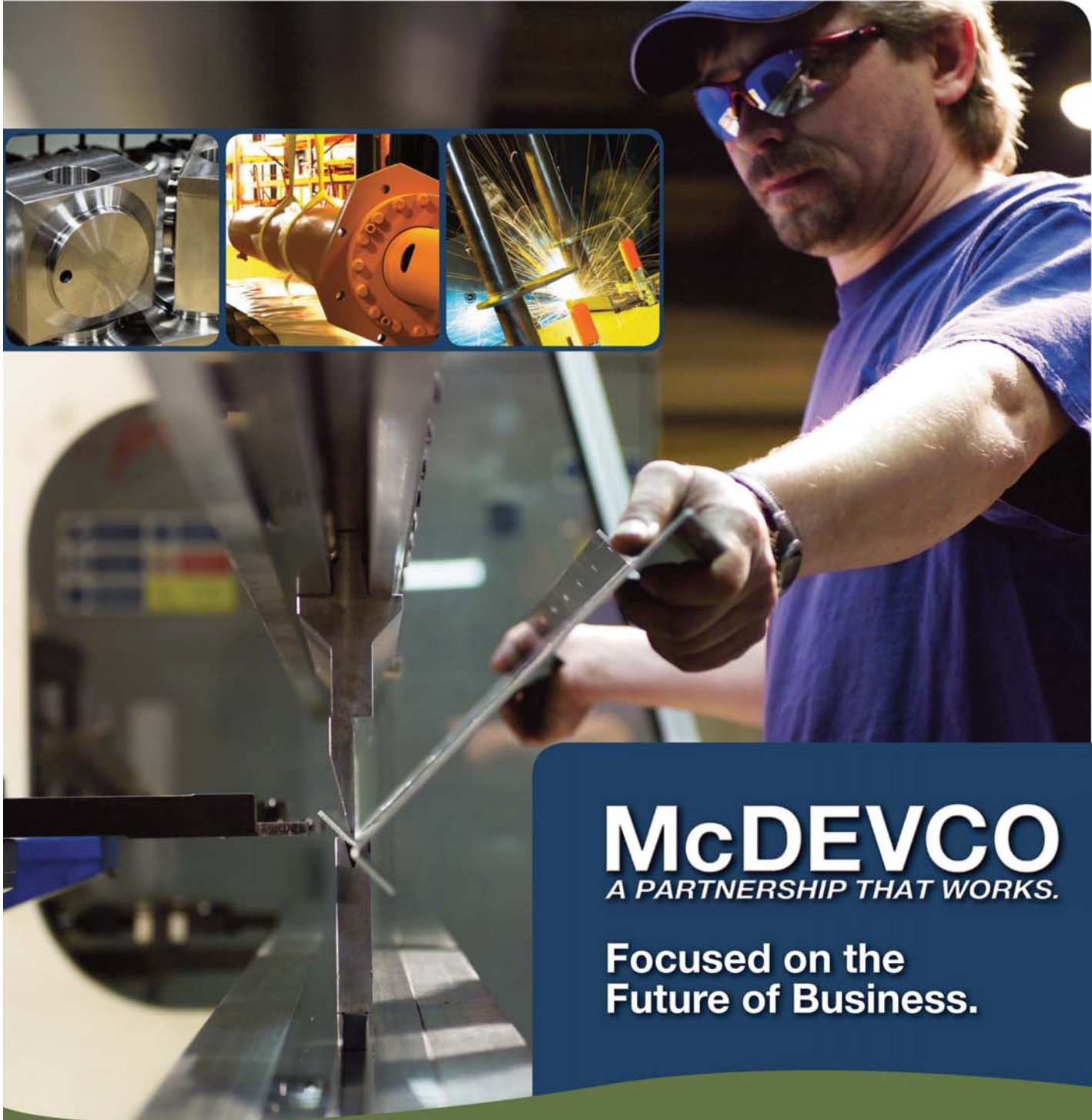
Many notable OEMs, contract builders and suppliers are already here or do a substantial amount of business in the county. Marathon County has the infrastructure and flexibility to facilitate continued growth and future expansion.

The metal fabrication and manufacturing sector in Marathon County is projected to grow in the next five years. While nationally the industry has been in a decline, the core group of proven workers and innovative companies has helped Marathon County buck economic trends that have kept them very optimistic about business opportunities ahead.

**Contact the team at McDEVCO for insightful research and effective options for expanding, relocating or starting your business.**



200 Washington Street, PO Box 6190, Wausau, WI 54402-6190  
715-845-6231 ♦ [www.mcdevco.org](http://www.mcdevco.org)



**McDEVCO**  
A PARTNERSHIP THAT WORKS.

**Focused on the  
Future of Business.**

715.845.6231 | [mcdevco.org](http://mcdevco.org)



The Marathon County metal manufacturing and fabrication sector is vibrant and poised to expand over the next ten years. It is through the commitment to advanced manufacturing processes and maintaining a high quality workforce that enables our regional companies in this sector to provide specialized products to OEMs around the world.

### This directory will help you to:

- **Locate and contact a specialized manufacturer that can help you solve a problem.**
- **Develop working relationships that allow for beneficial supply chain development.**
- **Create efficiencies by having industry businesses in the region work together.**
- **Lower the cost of goods in your supply chain.**
- **Establish product development opportunities.**

## Making Business Easier.

McDEVCO helps businesses navigate and leverage local and state programs, making expansion easier and start-ups simpler.

#### Business Retention & Expansion

Our partnership with The Wausau Region Chamber of Commerce's Business Retention & Expansion Committee helps answer questions about future expansion and potential relocation. We closely work with you to ensure your business needs are met so that the economy of Marathon County remains vibrant.

McDEVCO also offers consulting to help entrepreneurs develop and execute well-rounded business strategies. Our in-depth SCORE workshops, entrepreneurial training course and workforce development programs are available to help expedite ideas and strengthen business plans.

#### Site Location Assistance

With a finger on the pulse of the county, McDEVCO facilitates site location and expansion opportunities for businesses of every size and scope. And once a site is selected, financial partners are included in discussions to help accelerate the capital needed to make a project reality.

#### Financing Your Business.

McDEVCO's financial assistance programs and strong partnerships with local lenders help local businesses grow.

#### The Collaboration Co-Efficient.

By orchestrating key relationships between contract fabricators, local governments and capital lenders, McDEVCO puts Original Equipment Manufacturers (OEMs) in the center of unlimited opportunity. Marathon County's unique blend of access, workforce and flexibility gives business a collaborative environment where they can grow.

#### Intelligent Expansion.

McDEVCO's ability to match OEMs with process partners streamlines supply chains, simplifies production and increases an OEM's flexibility, all without having to dial up capital expenses. This diagram highlights how an OEM can use multiple vendors in Marathon County to extend production capabilities, without leaving the county. The proximity of contract fabricators makes an outsourcing strategy an option for small to mid-sized companies.

## Suppliers and Resources

#### Airgas

6010 Mesker Street  
Wausau, WI 54401  
**Owner/President:** Dale Hamilton  
**Phone:** 715-359-7050  
**Email:** dale.hamilton@airgas.com  
**Website:** airgas.com

#### American Welding & Gas

5600 Packer Dr  
Wausau, WI 54401  
**Branch Manager:** Bill Zastrow  
**Phone:** 715-845-4381, 800-257-2528  
**Fax:** 715-845-4674  
**Email:** bill.zastrow@amwelding.com  
**Website:** www.amwelding.com

#### Fastenal Company

4400 Stewart Avenue  
Wausau WI 54401  
**Owner/President:** Will Oberton  
**Phone:** 715-849-5793  
**Fax:** 715-849-5014  
**Email:** wiwau@stores.fastenal.com  
**Website:** www.fastenal.com

#### Grainger Industrial Supply

4455 Stewart Avenue  
Wausau, WI 54401  
**Branch Manager:** Bruce Kraimer  
**Phone:** 715-848-2131

#### Londerville Steel Enterprises Inc/ Concrete Supplies

12402 Woodland Drive  
Wausau, WI 54401  
**Phone:** 715-675-6193  
**Fax:** 715-675-4828  
**Email:** londerville\_steel@hotmail.com

## Workforce Training

#### North Central Wisconsin Workforce Development Board

1121 W Grand Avenue  
Wisconsin Rapids, WI 54495  
**Phone:** 715-422-4700  
**Fax:** 715-422-4715  
**Website:** www.ncwwdb.org

#### Machine Tool & Equipment Inc

7910 County Road U  
Wausau, WI 54401  
**Owner/President:** Randy and Travis Sondelski  
**Phone:** 715-675-6309  
**Fax:** 715-675-5647  
**Website:** www.machinetoolandequip.com

#### Mississippi Welders Supply Co Inc

7205 Rickyval Street  
Weston, WI 54476  
**Manager:** Aaron Wolfe  
**Phone:** 715-298-3199, 888-697-9353  
**Fax:** 715-298-3198  
**Email:** aaronw@mwsco.com  
**Website:** www.mwsco.com

#### Total Tool Supply Inc

7110 Packer Drive  
Wausau, WI 54401  
**Phone:** 715-848-2703, 800-261-8665  
**Fax:** 715-848-4103  
**Website:** www.totaltool.com

#### Wausau Steel Corporation Recycling Division

2900 West Sherman Street  
Wausau, WI 54401  
**Owner/President:** Peter Wallach  
**VP/GM Scrap Sales:** Keith Jaeger, kjaeger@wausausteel.com  
**Account Manager:** Jeff Osswald  
**Email:** josswald@wausausteel.com  
**Recycling/Safety/Traffic Manager:** Dan Williamson  
**Phone:** 715-715-845-4286  
**Fax:** 715-842-3954

#### Northcentral Technical College

1000 W Campus Dr  
Wausau, WI 54401  
**Phone:** 715-675-3331, 888-NTC-7144  
**Fax:** 715-675-9776  
**Website:** www.ntc.edu

### Vortex Tool Co Inc

5605 E Jelinek Avenue, Schofield, WI 54476-4236

**President:** Ron Serwa

**Phone:** 715-355-7707 **Fax:** 715-355-7353

**Website:** www.vortextool.com

**Products/service:** Manufactures machine diamond cutting tools for turning, boring or burnishing; knife, saw and tool sharpening and repair service

**Year established:** 1992

### Woods Equipment

1962 Queenland Drive

Mosinee, WI 54455

**Owner/President:** Jerry Johnson

**Midwest Sales Manager:** Mike Sims

**Phone:** 715-692-5951

**Email:** markwubben@woodsequipment.com

**Website:** www.woodsequipment.com

**Employment:** 800

**Products/service:** Woods, headquartered in Oregon, IL, manufactures top quality attachments and genuine replacement parts for the agricultural, landscape, and light construction markets. In March, 2007, Woods Equipment consolidated both the Schofield, WI and Gardner, MA operations into a newly constructed state of the art facility in Kronenwetter, WI. This facility is one of the country's largest suppliers of loader buckets, excavator buckets, backhoe buckets, mining buckets, hydraulic and mechanical couplers, and other construction equipment attachments bearing the CF, Wain-Roy, and Gannon names. Woods' equipment is known for its outstanding quality and performance.

**Years in Business:** 63

### Walder Manufacturing

1525 S County Road I

Wittenberg, WI 54499-8878

**Owner:** Mark Walder

**Phone:** 715-454-6458

**Products/service:** Manufactures portable field silos

**Year established:** 1992

### Wausau Hardware & Machine Co

T3680 County Road WW

Wausau, WI 54403-8725

**President:** Kenneth Borchardt

**Phone:** 715-675-3669

**Fax:** 715-675-3669

**Products/service:** Manufactures hinges

**Year established:** 1989



### Wausau Steel Service Center

2900 W Sherman Street

PO Box 329

Wausau, WI 54402-0329

**Vice President/General Manager:** Mike Keefe

**Phone:** 715-845-4286, 800-333-2297

**Fax:** 715-848-2930

**Email:** mkeefe@wausausteel.com

**Website:** www.wausausteel.com

### Wes Fab

14420 N 12th Avenue

Merrill, WI 54452-7999

**Principal:** Wes Schoepke

**Phone:** 715-536-0501

**Products/service:** Manufactures industrial machinery

## Metal Manufacturing and Fabricating Directory

### A & B Process Systems Corp

201 S Wisconsin Avenue

PO Box 86

Stratford, WI 54484-0086

**President/COO:** Glenn Linzmeier

**Phone:** 715-687-4332

**Fax:** 715-687-3225

**Email:** abprocess@abprocess.com

**Employment:** 60

**Website:** www.abprocess.com

**Products/service:** Process systems for dairy, food, cosmetic, beverage & pharmaceutical industries: custom stainless steel fabrication, pressure vessels, mixing & blending equipment.

**Year established:** 2005

### ADC Global Inc

5311 Fuller Street

Schofield, WI 54476-3102

**General Manager:** Dennis Edenhofer

**Phone:** 715-359-8338

**Fax:** 715-355-4440

**Website:** www.americandynatec.com

**Products/service:** Steel fabricator

**Year established:** 1967

### Akzo Nobel Coatings Inc

608 Western Road

Schofield, WI 54476-6105

**Principal:** Akzo Nobel

**Phone:** 715-359-4360

**Products/service:** Coating/engraving service

### Alloy-Tech & Design LLC

M423 Hwy E

Marshfield, WI 54449

**Phone:** 715-305-2665

**Products/service:** Blast furnace-steel works

**Year established:** 2007

### Aluminum Fabricated Products

1710 Morrison Avenue

PO Box 152

Rothschild, WI 54474

**Owner/President:** Mike Hafner

**Sales Consultant:** Ed McKenna

**Phone:** 715-359-4670

**Fax:** 715-359-0503

**Email:** mike.hafner@afpllc5.com

ed.mckenna@afpllc5.com

jim.loula@afpllc5.com

**Employment:** 7

**Website:** www.aluminumfabricatedproducts.com

**Products/service:** Job shop manufacturer of parts and assemblies using aluminum, steel, bronze, plastics or just about any material you can think of.

**Accomplishments:** Working on ISO9001-2008 certification

**Years in Service:** 2

### Apogee Wausau Group Inc

#### DBA Wausau Window & Wall Systems

250 S Wisconsin Avenue

Stratford, WI 54484-9678

**Phone:** 715-687-4070

**Products/service:** Manufactures metal doors/sash/trim

### Apogee Wausau Group Inc

#### DBA Wausau Window & Wall Systems

PO Box 1767

Wausau, WI 54402-1767

**Phone:** 715-843-4100

**Products/service:** Manufactures metal door trim



### Applied Laser Technologies LLC

8404 Venture Circle

Schofield, WI 54476-4399

**Member:** Brian Thuot

**Phone:** 715-359-3002

**Fax:** 715-241-9305

**Website:** www.aplaser.com

**Products/service:** Steel fabricator

**Year established:** 1999

### Atlas Anodizing Products

605 West Street

Wausau, WI 54401-5333

**Owner:** Kevin Dennis

**Phone:** 715-843-5056

**Products/service:** Plating/polishing service

**Year established:** 2005

### B & D Fabricators Inc

PO Box 226

Edgar, WI 54426-0226

**President:** Dale Duberstein

**Phone:** 715-352-7080

**Products/service:** Metal fabricating and welding

**Year established:** 1997

### Bauer Welding Inc

M1114 Hwy 97 N

Marshfield, WI 54449

**Presiden/Ownert:** Jed Bauer

**Phone:** 715-387-0250

**Fax:** 715-384-3483

**Email:** jed@bauerwelding.com

**Products/service:** Blast furnace-steel works

**Year established:** 2004

air compressor system feeds entire plant?  
where's your excess process heat going?  
need to maintain humidity?

**TARGET ENERGY LOSSES  
INCREASE YOUR  
BOTTOM LINE**

**Complete Control Inc.**

Energy Management Specialists  
energy@complete-control.com - complete-control.com

focus on energy  
The power is within you.

Focus on Energy preferred provider

### Begert Stainless Inc

S3493 Lincoln Avenue  
Marshfield, WI 54449-8320  
**President:** Scott Begert  
**Phone:** 715-659-4700  
**Website:** www.begertstainless.com  
**Products/service:** Blast furnace-steel works  
**Year established:** 2004

### Central Wisc Flex Inc

8510 Enterprise Way  
Schofield, WI 54476-4515  
**President:** Scott Sauer  
**Phone:** 715-355-4344  
**Products/service:** Manufactures flexible metal hose, tubing and bellows  
**Year established:** 1992

### Central Wisconsin Finishing

1708 Morrison Avenue  
Rothschild, WI 54474  
**Member:** John Peterson  
**Phone:** 715-355-5789  
**Website:** www.cwfinishing.net  
**Products/service:** Plating/polishing service  
**Year established:** 2003



Custom & Complex Cylinder Specialists™

### Clover Industries, Inc.;

#### A Subsidiary of the Oilgear Company

PO Box 1606  
Wausau, WI 54402-1606  
**Division Manager:** John Behrendt  
**Phone:** 715-843-5980  
**Website:** www.CloverIndustriesInc.com  
**Products/service:** Custom design/build manufacturer of high-performance hydraulic cylinders and integrated cylinder systems.  
**Accomplishments:** ISO 9001-2008  
**Year established:** 2005



### Colby Metal Inc

701 Industrial Drive  
PO Box 466  
Colby, WI 54421  
**Owner/President:** Mark Nemschoff  
**Sales Contact:** Mark Viegut  
**Phone:** 715-223-2334  
**Email:** mviegut@colbymetal.com  
**Employment:** 5  
**Products/service:** Contract manufacturer/laser cutting (sheet metal and tubing) brake press, saw, assembly, package, powder coating, robot welding.  
**Accomplishments:** ISO certified, 5-S  
**Years in Business:** 24



### Crystal Finishing Systems Inc

2610 Ross Avenue  
Schofield, WI 54476  
**Owner President:** Mark Matthiae  
**Sales Consultant:** Curt Kolberg  
**Phone:** 715-355-5351  
**Fax:** 715-355-8812  
**Email:** mark.matthiae@crystalfinishing.com  
**Website:** www.crystalfinishing.com  
**Employment:** 350  
**Products/service:** Extruded aluminum, paint and powder coating, fabrication, e-coat, aluminum anodize, contract manufacturing, distribution  
**Accomplishments:** ISO 9000-2000 Lean Manufacturer, short lead times and static deliveries available  
**Years in Business:** 17

### CTECH

7501 Commerce Drive  
Schofield, WI 54476-4548  
**President:** James Greenheck  
**Phone:** 715-355-8842  
**Fax:** 715-355-8932  
**Website:** www.racecabinet.com  
**Products/service:** Aluminum or formed product coloring and finishing service  
**Year established:** 1994

### Custom Steel, Inc.

318 Ross Avenue P.O. Box 25  
Schofield, WI 54476-0025  
Ph: 715-355-1300 Fax: 715-355-5200



### Custom Steel Works Inc

318 Ross Avenue  
Schofield, WI 54476  
**Owner/President:** Allen (Al) Schiller  
**Sales Consultant:** Allen Schiller  
**Phone:** 715-355-1300  
**Website:** www.customsteelinc.com  
**Employment:** 25-30  
**Products/service:** Manufacturer of overhead cranes / hoists for 1/4 ton - 160 ton bridge cranes. Services also include structural steel fabrication, steel - aluminum - stainless angle, beams, channel, grating, pipe, plate, rebar, sheet and tread plate. Also can provide heat blasting painting on site.  
**Accomplishments:** Welders ASME certified in stick, wire and plate up to 3/4".  
**Years in Business:** 22

### Ddt Custom Tool & Mfg

1633 County Road B  
Mosinee, WI 54455-9744  
**President:** Dennis Steiber  
**Phone:** 715-693-4641  
**Products/service:** Machine shop  
**Year established:** 1989



### Stainless Specialists Inc

T7441 Steel Lane  
Wausau, WI 54403  
**Owner/President:** Roger Prochnow  
**Sales Consultant:** Henry Rose  
**Phone:** 715-675-4155  
**Website:** www.stainlessspecialists.com  
**Employment:** 150  
**Products/service:** Custom design, manufacture, and installation of equipment-primarily for the food processing industry to include pipefitting, HVAC, plumbing and service for both commercial and residential.  
**Years in Business:** 26



### Sulzer Machine & Manufacturing Inc

2475 Spring Brook Road  
Mosinee, WI 54455  
**President/Owner:** Gary M. Sulzer  
**Phone:** 715-443-2569  
**Fax:** 715-443-2386  
**Email:** sulzer@sulzermachine.com  
**Website:** www.sulzermachine.com  
**Employees:** 48

**Products/service:** All types of machining up to 50,000 lbs. including CNC vertical/horizontal turning, milling, boring, gundrilling and all types of grinding such as Blanchard, OD, ID and centerless. Other services include vibratory stress relieving and certified welding in stainless steel, aluminum, carbon steel, and titanium; in-place machining including boring, turning, milling, flange facing, keyway cutting and welding; climate-controlled inspection lab with programmable and portable CMM capabilities. Our skilled craftsmen use the latest technologies in machine tool innovations, engineering/reverse engineering and production software to meet your ongoing needs.

**Years in Business:** 23

### United Machine Corporation

401 Cherry Street  
Wausau, WI 54401  
**Owner/President:** William Hackbarth  
**Sales Consultant:** William Hackbarth  
**Phone:** 715-845-4368  
**Fax:** 715-842-9376  
**Employees:** 6  
**Products/service:** Job shop for all types of custom orders  
**Years in Business:** 64  
**Year established:** 1945

### Urban Iron Works

10701 Packer Drive  
Marathon, WI 54448-9546  
**Owner:** Leonard Urban  
**Phone:** 715-842-9660  
**Products/service:** Manufactures industrial machinery  
**Year established:** 1995

Wausau Steel has earned a trusted reputation within our industry. Our quick response and reliable products and services have attracted customers from a variety of industries and allowed us to build strong partnerships with such companies as Badger Equipment.

**Production applications include:**

- high definition plasma through 1-1/4"
- heavy plate processor; machining, beveling, drilling, tapping, milling, center sinking etc.
- precision sawing
- 500 tons of forming capabilities
- shot blasting, shearing
- punching operations

**An independently owned steel service center with multiple locations:**  
Fridley, MN • Milwaukee WI • Wausau WI

**Handling steel is just part of our trade, handling customer's unique challenges is our mission.**

Wausau Steel SERVICE CENTER  
2900 Sherman St., P.O. Box 329 • Wausau, WI 54402-0329  
Ph. (715) 845-4286 • Toll Free (800) 333-2297  
Fax: (877) 845-4287 • Email: sales@wausausteel.com  
www.wausausteel.com

### Omega Thermo Products LLC

PO Box 141  
Stratford, WI 54484-0141  
**Member:** Herman Oonk  
**Phone:** 715-687-8102  
**Fax:** 715-687-8053  
**Products/service:** Plate metal fabricator  
**Year established:** 1998

### PDM Bridge LLC

3526 Sherman Street  
Wausau, WI 54401-8060  
**Phone:** 715-845-3191  
**Products/service:** Steel fabricator

### PDM Solar Inc

100 North 72nd Avenue  
PO Box 36  
Wausau, WI 54402-0036  
**CEO/President:** Dave Baker  
**CFO/Treasurer:** Howard Manske  
**Phone:** 715-573-2805  
**Website:** www.pdmsolar.com  
**Employment:** 6  
**Products/Service:** Thermal Transformer Energy Conversion Device uses Low Temperature Input, Provides A/C, Heat, and Electricity without electrical input, Solar Thermal Collectors, Low Energy Pumps, Geo-Thermal, Off Grid Electrical Generation, and Controls.  
**Accomplishments:** 2 Patents, 5 Patents Pending  
**Year established:** 2006

### Piper Products Inc

300 S 84th Avenue  
Wausau, WI 54401-8460  
**President:** Tony Sweeney  
**Phone:** 715-842-2724  
**Fax:** 715-848-1870  
**Products/service:** Manufactures food products machinery  
**Year established:** 1988

### Portable Welding of Northern & Central WI

305 N 5th Avenue  
Wausau, WI 54401-4455  
**Principal:** Dave Statezny  
**Phone:** 715-845-0960  
**Products/service:** Welding  
**Year established:** 1992

### Ramrod Industries LLC

800 S Monroe Street  
Spencer, WI 54479-9369  
**Managing Director:** Todd Middlestep  
**Phone:** 715-659-4996  
**Fax:** 715-659-4696  
**Website:** www.ligonindustries.com  
**Products/service:** Manufactures fluid power cylinders, hydraulic or pneumatic  
**Year established:** 1992

### Raymond Streveler

2651 Eagle Lane  
Edgar, WI 54426-9344  
**President:** Raymond Streveler

**Phone:** 715-352-2237  
**Fax:** 715-352-2237  
**Products/service:** Manufactures industrial machinery, farm machinery/equipment, construction machinery  
**Year established:** 1981

### Regal Beloit Corp

PO Box 8003  
Wausau, WI 54402-8003  
**Phone:** 715-675-3311  
**Products/service:** Manufactures speed changers/drives

### Ryan Manufacturing Inc

6606 Machmueller Street  
Schofield, WI 54476-3897  
**President:** James Mohelnitzky  
**Phone:** 715-359-2565  
**Fax:** 715-359-4839  
**Website:** www.ryanmfg.com  
**Products/service:** Machine shop, jobbing and repair services  
**Year established:** 1963

### Schuetz Metals

PO Box 1305  
Wausau, WI 54402-1305  
**Owner/President:** John Peterson  
**Sales Consultant:** Randy Ruder  
**Email:** Randy.Ruder@schuetzmetals.com  
**Phone:** 715-573-0202 (cell)  
**Website:** www.schuetzmetals.com  
**Employment:** 105  
**Products/service:** Schuetz Metals is a full-service custom steel fabricator that provides effective solutions and on-time delivery using the latest technology. Our highly skilled employees use the latest in engineering and production software, cnc, laser cutting, precision machining and industrial powder coating to meet the demands of manufacturers in defense, construction, agriculture, architectural metal forming and many others.  
**Accomplishments:** ISO Certified by March of 2011  
**Years in Business:** 30+

### Siemens Water Technologies

301 W Military Road  
Rothschild, WI 54474-1944  
**Sales Manager:** Jim Carroll  
**Phone:** 715-359-7211  
**Products/service:** Manufactures degreasing machines; engineering services; commercial physical research laboratory; plate metal fabricator; manufactures pumps and pumping equipment

### Spencer Machine & Engineering

PO Box 205  
Spencer, WI 54479-0205  
**Owner:** Robert Detwiler  
**Phone:** 715-659-4525  
**Fax:** 715-659-4525  
**Products/service:** Machine shop  
**Year established:** 1985

### Flory Metal Lathe Shop

1519 Burek Avenue  
Wausau, WI 54401-2112  
**Owner:** George Flory  
**Phone:** 715-675-7108  
**Products/service:** Manufactures industrial machinery  
**Year established:** 1969

### Future Products Corp

8410 Technology Drive  
Schofield, WI 54476-4544  
**President:** Craig Mortensen  
**Phone:** 715-241-6600  
**Website:** www.fp4-fans.com  
**Products/service:** Manufactures blowers/fans  
**Year established:** 2002

### G3 Industries Inc

1450 Dons Way  
Mosinee, WI 54455-7269  
**President:** James Frings  
**Phone:** 715-693-1450  
**Products/service:** Manufactures stamped or pressed metal machine parts  
**Year established:** 2006

### Goetsch's Welding & Machine

9480 S County Road K  
Merrill, WI 54452-7728  
**President:** Kevin Goetsch  
**Phone:** 715-536-2658  
**Fax:** 715-536-6290  
**Website:** www.goetschs.com  
**Products/service:** Machine shop, jobbing and repair services  
**Year established:** 1969

**AWG**  
**AMERICAN WELDING & GAS**  
**INDUSTRIAL WELDING SUPPLIES**  
INCLUDING: GASES; CONSUMABLES; AND SAFETY SUPPLIES.  
**LINCOLN ELECTRIC** **ESAB** **Miller**  
THE WELDING EXPERTS™ The Power of Blue.  
**PLEASE GIVE US A CALL AT:**  
**1-800-257-2528**  
**ASK US HOW TO SAVE ON YOUR WASTEWATER TREATMENT**

### Gordon Aluminum Industries Inc

1000 Mason Street  
Schofield, WI 54476-1847  
**President:** Alfred Gordon  
**Phone:** 715-359-6101  
**Fax:** 715-359-4661  
**Products/service:** Manufactures extruded aluminum products; anodizing service; manufactures window and door frames; steel fabricator  
**Year established:** 1958



### Greenheck Fan Corp

PO Box 410  
Schofield, WI 54476-0410  
**President:** Dwight Davis  
**Phone:** 715-359-6171  
**Website:** www.greenheck.com  
**Products/service:** Sheet metal fabricator; manufactures blowers and fans; manufactures industrial or commercial blowing fans; manufactures industrial or commercial exhaust fans; manufactures industrial or commercial ventilating fans  
**Year established:** 1947



### Imperial Industries Inc

505 W Industrial Park Avenue  
Rothschild, WI 54474  
PO Box 1685  
Wausau, WI 54402-1685  
**President:** Russell Putnam  
**Sales Manager:** Tom Aerts  
**Phone:** 715-359-0200  
**Fax:** 715-355-5349  
**Website:** www.imperialind.com  
**Employment:** 150  
**Products/service:** Manufacturer of factory and field-welded bulk storage tanks for virtually any dry bulk material and pressure vessels requiring "U" stamp with internal pressures up to 3000 PSI. Also septic tankers, portable sanitation service trucks and slide-in units for the handling of residential and portable toilet liquid wastes including portable toilets, hand wash stations and related chemicals. Plus agricultural waste handling equipment including vacuum and spreader tanks, truck mounted tankers and pumps for agitation or load out.  
**Accomplishments:** ASME "U" and "R" stamp holder, Portable Sanitation Association International member  
**Years in Business:** 29

### Industrial Repair Service of Wausau Inc

5405 Mesker Street  
Schofield, WI 54476-4306  
**President:** Larry Muelver  
**Phone:** 715-355-1668  
**Products/service:** Manufactures industrial trucks/tractors  
**Year established:** 1981



# Developing tomorrow's workforce

Northcentral Technical College (NTC) focuses on the future workforce by providing highly technical real-world education to meet the challenges of today's workplace. One-and two-year degrees provide a concentrated focus on hands-on learning of occupational skills targeting the specific abilities needed to be competitive.

- Over 7,500 square feet of robotics and automation applications
- 40 workstations loaded with CAD software
- Over 30 welding booths
- 1000 watt Amada Lazer Cutting System
- Kuka KR16 mulit-axis robot

NTC is on the leading edge of renewable energy technologies, metal fabrication, robotic welding and engineering applications. Across the 10-county district, NTC values its partnerships with businesses offering customized on-site training and professional development opportunities to grow and develop the workforce. To learn more visit [www.ntc.edu](http://www.ntc.edu) or call 888.NTC.7144.

- Machine Tool Equipment =
- EC 400 Horizontal Machining Center
  - 30 HP 12,000 RPM spindle
  - High pressure through the spindle coolant up to 1000 PSI
  - High capacity 70 position tool changer
  - One Degree increment indexing table
  - Work piece probe system

[www.ntc.edu](http://www.ntc.edu)



## When you're ready to hire, we're here to help!

The North Central Wisconsin Workforce Development Board Bridges Employers, Workers & Education



- Our Sector grants provide workforce training.
- Job seekers and workers attend customized training to earn sector-specific college credits and credentials, workforce readiness certificates, and career support. Career Pathways help workers move up in the labor force with skills that employers need.
- Our Sectors provide employers with industry-specific job training and support in Advanced Manufacturing; Health Care; Information Technology; Green Apprenticeships; Pre-Engineering; and Transportation.

**Join your peers and become part of a Sector.**  
**LEARN MORE.** Visit [www.ncwwdb.org](http://www.ncwwdb.org) or call 715-422-4700.



1121 West Grand Avenue • Wisconsin Rapids, WI  
715-422-4700 • [www.ncwwdb.org](http://www.ncwwdb.org)

## Wisconsin Job Centers and Job Center of Wisconsin Assist Employers with Low Cost or No Cost:

- Job Orders
- Applicant Pre-screening
- Work Opportunity Tax Credits
- WorkKeys
- Labor Law Clinics
- Job Fairs
- Labor Market Information

Visit Job Center of Wisconsin at: [www.wisconsinjobcenter.org](http://www.wisconsinjobcenter.org) or call 888-258-9966 to find the Wisconsin Job Center nearest you.



Connecting North Central Wisconsin's Workforce

**Sales Consultant:** Carla Keller  
**Phone:** 715-359-7001, 817-307-4418  
**Fax:** 715-359-5951  
**Email:** ckeller@melroncorp.com  
**Website:** www.melroncorp.com  
**Employment:** 18

**Products/service:** Melron manufacturers brass, bronze and aluminum sand-cast products specializing in architectural hardware and casting for the commercial aluminum and wood window industries. Utilizing our foundry, machining and finishing capabilities, we start with an ingot of 100% recycled, no-lead metal and ship a finished product. Strong in product development, Melron employs the latest 3D design and rapid prototyping technology to take a new product from concept to completion quickly and economically.  
**Accomplishments:** Certified woman owned business. Pioneered use of Fused Deposition Modeling technology for sand foundry tooling and opened a completely new market for this application of FDM. (FDM is the creation of a solid form through deposition of thin layers of thermoplastic material guided by a 3D model).  
**Years in Business:** 46

#### Modern Machine Inc

2003 Falcon Drive  
Wausau, WI 54401  
**Owner/President:** Thomas D Daniels  
**Phone:** 715-675-7295  
**Fax:** 715-675-9436  
**Website:** www.MMI@DWave.net  
**Employment:** 7  
**Products/service:** Production job shop, producer of metal component parts  
**Accomplishments:** Short lead times competitive rates  
**Years in Business:** 17

#### Mosinee Sheet Metal & HVAC

1407 Old Highway 51  
Mosinee, WI 54455-8512  
**Owner:** Andrew Welling  
**Phone:** 715-693-4051  
**Products/service:** Manufactures sheet metalwork plumbing/heating/air conditioning contractor  
**Year established:** 1999

#### Norlen Inc - Tomcor Industries

900 Grossman Drive  
Schofield, WI 54476  
**Owner/President:** Tom Suthers  
**Vice President/General Manager:** Jeff Brillhart  
**Phone:** 715-359-0506 Ext. 348  
**Fax:** 715-359-0901  
**Email:** jbrillhart@norlen.com  
**Website:** www.norlen.com  
**Employment:** 110  
**Products/service:** Metal component manufacture - CNC machinings, hard-tool progressive/transfer stampings, fabrications, weldments, tube bending, plate rolling, assembly, and powder coat finishing, assembly  
**Accomplishments:** ISO 9001-2000 certified  
**Years in Business:** 46+ years

#### Northwest Tool & Manufacturing

2200 N 4th Avenue  
Wausau, WI 54401-1911  
**President:** Matthew Brill

**Phone:** 715-675-7424  
**Fax:** 715-675-6747  
**Website:** www.northwesttool.com  
**Products/service:** Manufactures special dies and tools; machine tools and accessories  
**Year established:** 1967

#### Now Machining LLC

312 Alexander Avenue  
Edgar, WI 54426-9314  
**Member:** Rich Nowak  
**Phone:** 715-352-2293  
**Products/service:** Manufactures industrial machinery  
**Year established:** 2001

#### O E M Metal Specialties Inc

4001 Dixie Avenue  
Wausau, WI 54401-9702  
**President:** Arvid Karrow  
**Phone:** 715-675-9899  
**Fax:** 715-675-2665  
**Products/service:** Welding and punch forming  
**Year established:** 1982

#### Oldcastle Glass Engineered

PO Box 299  
Wausau, WI 54402-0299  
**President:** Ron Rutledge  
**Phone:** 715-845-9666  
**Fax:** 715-842-3281  
**Website:** www.oldcastleglass.com  
**Products/service:** Manufactures metal louver windows  
**Year established:** 1972



**Bringing you the best in welding equipment, industrial, medical, and rare gases, cryogenic liquids, filler metals, safety supplies, fire protection and many other related products and services.**

**Mississippi Welders Supply Co., Inc.**



Hudson, WI  
Altoona, WI  
Red Wing, MN  
Rochester, MN  
Winona, MN  
Decorah, IA  
Weston, WI  
Marshfield, WI  
La Crosse, WI

7205 Rickyval Street  
Weston, WI 54476  
Store 715-298-3199  
888-697-9353  
Fax 715-298-3198

#### Industrial Service & Machine

300 Ross Avenue  
Schofield, WI 54476-1868  
**President:** Michael Liedtke  
**Phone:** 715-355-3000  
**Website:** www.isami.com  
**Products/service:** Manufactures plastic working machinery  
**Year established:** 1981

#### Integra Tool & Mfg Inc

8325 Enterprise Drive  
Wausau WI 54401  
**Owner/President:** David Russ  
**Sales Consultant:** Mark Mudler  
**Phone:** 715-848-5646  
**Fax:** 715-848-5646  
**Email:** druss@integratool.com, mmudler@integratool.com  
**Website:** www.integratool.com  
**Employment:** 7  
**Products/services:** We specialize in the manufacturing of tooling, dies, gages, fixtures, prototypes, light fabrication and special machinery. Our experience also lies in the area of small lot production runs, CNC turning, CNC milling, and light stamping.  
**Years in Service:** 4.5

#### J & D Tube Benders Inc

PO Box 316  
Schofield, WI 54476-0316  
**Owner/President:** Tom Felch and Janet Felch  
**Sales Consultant:** Jon Felch  
**Phone:** 800-283-8302  
**Email:** tfelch@jdtube.com, dfelch@jdtube.com  
**Employment:** 90  
**Website:** www.jdtube.com  
**Products/services:** J&D is primarily a supplier of bent tubular components, however our capabilities also include secondary operations such as drilling, milling, brazing, welding, laser cutting, etc.  
**Accomplishments:** ISO 9001-2008 Lean manufacturing principles in place since 2008. Current lead times three weeks, sooner for rush orders and prototypes.  
**Years in Service:** 42

#### J & S Bending Inc

E19598 Partridge Road  
Ringle, WI 54471-9669  
**President:** Jerry Juedes  
**Phone:** 715-446-3772  
**Products/service:** Bends aluminum windows  
**Year established:** 1983



#### JARP Industries Inc

PO Box 923  
Wausau, WI 54402  
**Owner/President:** Kevin Kraft  
**Sales Consultant:** Rob Stack  
**Phone:** 715-359-4241  
**Fax:** 715-355-4960  
**Website:** www.jarpind.com  
**Employment:** 200  
**Products/service:** Design and manufacture of hydraulic cylinders and swivels and custom fabricated structures. Remanufacturing of cylinders.  
**Accomplishments:** ISO 9001 certified Company-wide focus on continuous improvement 92% of customers would refer us to a colleague.  
**Years in business:** 51

#### Kafka Conveyors & Equipment

1388 State Highway 107  
Mosinee, WI 54455-8684  
**President:** James Kafka  
**Phone:** 715-693-2327  
**Products/service:** Manufactures conveyors/equipment  
**Year established:** 1994



**LONDERVILLE STEEL ENTERPRISES, INC. CONCRETE SUPPLIES**

**SELLING: New & Surplus Steel • Stainless • Aluminum • Brass**

**T-1 & AR Plate • Mechanical Tubing • Finding Odd Metals**

**Delivery Available**

**Mon - Thurs • 8am - 6pm**  
**Fri - 8am - 5pm • Sat - 8am - Noon**

**JOHN & JEREME**  
londerville\_steel@hotmail.com

**Phone: 715-675-6193 • Fax: 715-675-4828**  
12402 Woodland Drive • Wausau, WI 54401

### Knudson Sheet Metal

724 Ross Avenue  
PO Box 27  
Schofield, WI 54476  
**Owner/President:** David Gleason  
**Sales Consultant:** David Gleason  
**Phone:** 715-359-8845  
**Fax:** 715-359-8845  
**Employment:** 9  
**Products/service:** Job shop, sheet metal fabrication, gutters, some electrical parts, water jetting  
**Years in Business:** 60

### KPS Tool & Die Inc

2874 County Rd N  
Marathon, WI 54448-9669  
**President:** Paul Weinkauff  
**Phone:** 715-443-3304  
**Website:** www.kpstool.com  
**Products/service:** Manufactures dies/tools/jigs/fixtures  
**Year established:** 1998



### Lemke Industrial Machine Inc

1204 County Road NN  
Marathon, WI 54448-9792  
**Owner/President:** David A Lemke  
**Sales Consultant:** David A Lemke  
**Phone:** 715-842-3221  
**Fax:** 715-848-7192  
**Email:** dlemke@lemkeindustrial.com  
**Website:** www.lemkeindustrial.com  
**Employment:** 18  
**Products/services:** Expert machining you can depend on. Lemke Industrial Machine has been providing precision machining services to businesses throughout North America for more than 35 years. While our services are diversified, our primary focus is on larger, often challenging components or products. Our skilled machinists are often called upon to handle jobs that others have to decline. Please consider Lemke your "Can do!" machining resource.  
**Years in Service:** 37  
**Year established:** 1973

### Linetec

PO Box 1767  
Wausau, WI 54402-1767  
**Co-Owner:** Andy Joswiak  
**Phone:** 715-843-4100  
**Fax:** 715-843-4121  
**Website:** www.linetec.com  
**Products/service:** Manufactures metal doors, sash and trim  
**Year established:** 1983

### Lite Gard LLC

472 County Road S  
Mosinee, WI 54455-9317  
**President:** Debra Walsh  
**Phone:** 715-693-1122  
**Products/service:** Manufactures aluminum extruded products  
**Year established:** 2001



### Londerville Steel Enterprises - Concrete Supply Division

12402 Woodland Drive  
Wausau, WI 54401  
**Owner/President:** John Londerville, Jereme Londerville  
**Sales Consultants:** Jeff Zimmerman, Randy Klug, Jesse Londerville, Aaron Bodenheimer  
**Phone:** Steel Division, 715-675-6193  
**Fax:** 715-675-4828  
**Phone:** Concrete Division: 715-675-4800  
**Fax:** 715-675-2973  
**Website:** www.LondervilleSteel.com  
**Employment:** 20  
**Products/service:** Steel Division--resale of new and surplus steel/stainless/aluminum/brass/mechanical tubing/Ar & T1 plate  
Concrete Division--rebar fabrication and detailing/resale of rebar/mesh/concrete chemicals/poly/general suppliers/ties/nails and much more  
**Years in business:** Over 30 years

### Lycowausau Inc

PO Box 2022  
Wausau, WI 54402-2022  
**President:** Carl Lindblom  
**Phone:** 715-845-7867  
**Website:** www.lycowausau.com  
**Fax:** 715-842-8228  
**Products/service:** Manufactures air/gas compressors  
**Year established:** 1973

### Maine Tool & Machine Co Inc

1754 Arthur Avenue  
Wausau, WI 54401-2435  
**President:** Steven Freund  
**Phone:** 715-675-6237  
**Fax:** 715-675-5647  
**Products/service:** Manufactures special tools and dies  
**Year established:** 1974



### Major Industries Inc

7120 Stewart Avenue  
Wausau, WI 54401  
**Owner/President:** Wayne Toenjes  
**Sales Consultant:** David Nyseth, National Sales Manager  
**Phone:** 888-759-2678  
**Email:** info@majorskylights.com  
**Website:** www.majorskylights.com  
**Employment:** 75  
**Products/services:** Major Industries manufactures a full line of custom skylights and translucent curtainwall systems. From Guardian 275® translucent panel systems to more traditional glass skylight, Major Industries has a daylighting system that is right for your next project.  
**Accomplishments:** 2009 Wausau Region Chamber of Commerce

Small Business of the Year - Manufacturing  
**Years in Service:** 30

### Marathon Machine Technology

6947 State Highway 97  
Athens, WI 54411-8509  
**Phone:** 715-257-1023  
**Website:** www.marathonmachine.com  
**Products/service:** Machine shop  
**Year established:** 1995



### Marathon Metals

C4098 Pauline Lane  
Stratford, WI 54484  
**Owner/President:** Robert Kulp, John Kulp  
**Sales Consultants:** Robert Kulp, John Kulp, Keith Kuehmichel  
**Phone:** 715-687-3368  
**Fax:** 715-687-3264  
**Email:** 'firstname'@kulproof.com  
**Website:** www.marathonmetals.com  
**Employees:** 3  
**Products/service:** Custom sheet metal fabrication and installation of cladding and water control systems in stainless, aluminum, copper and steel for building exteriors. Roll forming standing seam metal roof panels and fabricating associated trims. Reproduction and installation of historical sheet metal ornaments including spires, steeples, crosses, copulas, dentils, modillion, louvers and columns. Welding; copper, aluminum, stainless steel.

**Accomplishments:** Copper Development Association Certified, Member National Roof Contractors Association  
**Years in Business:** 10

### Mc Clean-Anderson Inc

PO Box 20  
Schofield, WI 54476-0020  
**President:** Herbert Liedtke  
**Phone:** 715-355-3006  
**Fax:** 715-359-0600  
**Website:** www.mccleananderson.com  
**Products/service:** Manufactures plastic working machinery; engineering consulting services; manufactures computer peripheral equipment  
**Year established:** 1961

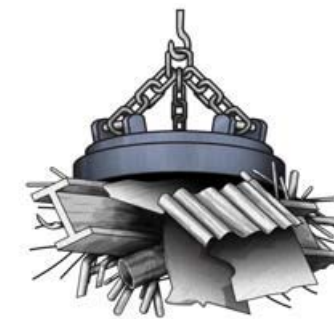
### Mead Manufacturing LLC

150 Lois Lane  
Mosinee, WI 54455-9754  
**Partner:** Jason Geier  
**Phone:** 715-693-5703  
**Products/service:** Blast furnace/steel works  
**Year established:** 1990



### Melron Corporation

8110 Technology Drive  
PO Box 137  
Schofield, WI 54476-0137  
**Owner/President:** Debbie Flood



## WAUSAU STEEL RECYCLING

Since 1951

2900 W Sherman Street  
Wausau, WI 54401

(715) 845-4286

Email us at:  
[recycling@wausausteel.com](mailto:recycling@wausausteel.com)

### Wausau Steel Recycles:

#### STEEL

New Steel Drops  
Skeletons/Plate  
Stampings  
Sheets  
Turnings  
Iron  
Misc. Steel, Obsolete Plant Maintenance  
Scrap and Clean Ups

#### ALUMINUM

All Grades and Alloys

#### STAINLESS STEEL

All Grades including 304, 316, 400 Series, Nickel Alloys

#### COPPER/BRASS WIRE & SOLIDS, ELECTRIC MOTORS

#### ZINC & LEAD

#### Various SLAGS & DROSSES

- ▶ Servicing Industrial Accounts throughout Central Wisconsin
- ▶ Providing lugger boxes, trailers, trucks and other equipment
- ▶ Fast customer responsive pickups and detailed settlements
- ▶ Environmentally trained and responsive